

**CERTIFIED LAND CORNER RECORDATION**

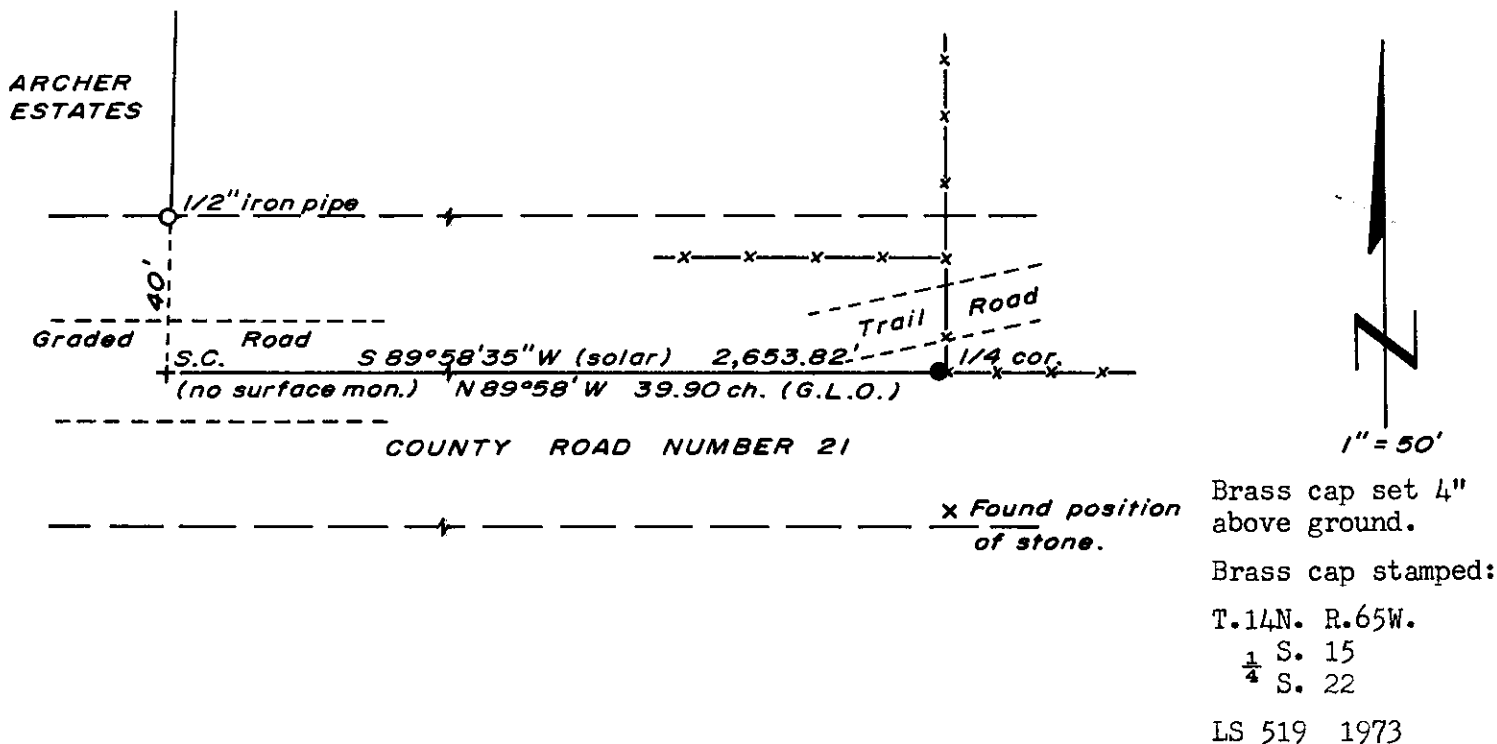
DESCRIPTION OF CORNER EVIDENCE FOUND, AND ORIGINAL RECORD (if known)

LOCATION Found a 4" x 8" x 12" Granite stone with "1/4", chipped and lying on top of ground where shown in sketch.  
 1/4 S.15  
 1/4 S.22 Corner position re-monumented at fence corner post (RR tie) as shown in sketch.  
 T.14N., R.65W.  
 6th P.M. G.L.O. record - Granite Boulder, 15 x 8 x 5.

DESCRIPTION OF MONUMENT AND ACCESSORIES ESTABLISHED TO PERPETUATE THE ORIGINAL LOCATION OF THIS CORNER:

At the corner: Set a 1 1/2" dia. x 30" long (concrete-filled) iron pipe with brass cap.  
 Accessories: Left stone as memorial (planted near corner monument).

SKETCH, WITH COURSE AND DISTANCE TO ADJACENT CORNER IF DETERMINED IN THIS SURVEY.  
 (May Sketch or Paste Reproduction on Reverse Side.)



Brass cap set 4" above ground.  
 Brass cap stamped:  
 T.14N. R.65W.  
 1/4 S. 15  
 1/4 S. 22  
 LS 519 1973

I, R.L. Hudson certify that I have carefully performed ~~or reviewed~~ the work done on the diagrammed corner as reported on this recordation form and approve the same.

R.L. Hudson Wyoming L.S. No. 519  
 Signature of Surveyor Registration No.

STATE OF WYOMING,  
 Office of Clerk and Recorder,  
 County of Taiwan

This "corner record" was filed for record on the 24 day of June, 19 76, was noted on the cross-index plat and is assigned page No. \_\_\_\_\_, in book No. \_\_\_\_\_.

John B. Heiman  
 County Official

Cross Index No. <u>N15</u>	T. <u>T14</u>	R. <u>65</u>	<u>6</u> Mer.
_____	T. _____	R. _____	Mer.
_____	T. _____	R. _____	Mer.
_____	T. _____	R. _____	Mer.
_____	T. _____	R. _____	Mer.
_____	T. _____	R. _____	Mer.
_____	T. _____	R. _____	Mer.

The State of Wyoming }  
County of Laramie }

This instrument was filed for record  
at 10 51 o'clock AM on the  
24 day of June  
A. D. 1924 and duly recorded in  
Book ..... on page .....



County Clerk & Ex-Officio Register of Deeds  
By JW Deputy